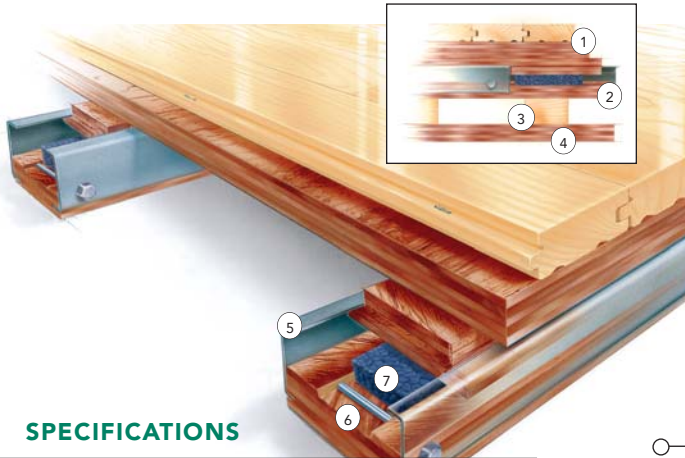


F I X E D R E S I L I E N T

SYSTEM FEATURES AND BENEFITS

A floating sports floor system providing excellent stability and shock absorption with uniform high ball rebound, consisting in general of a vapor barrier, resilient Rezill pads, steel channel encased base and flex sleepers, plywood subfloor, maple flooring, sanding, sealers, finishes, game lines and wall base.

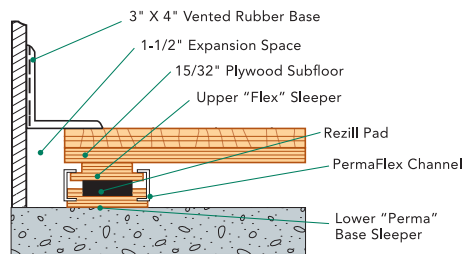


- ① Upper Flex Sleeper
- ② Lower Base Sleeper
- ③ Optional added profile block for height adjustment
- ④ Optional added support plate
- ⑤ Heavy Duty, buckle resistant steel channel provides great resistance to upward pressure
- ⑥ Protective Resilient Pad Encasement Slot
- ⑦ Rezill Pad

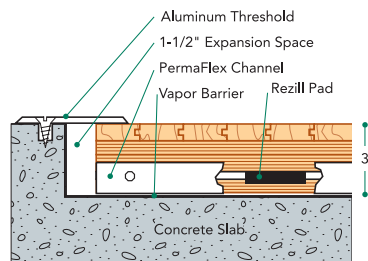
SPECIFICATIONS

MANUFACTURING	ISO9001:2000 CERTIFIED
U.S. PATENT #	5,778,621
SYSTEM TYPE	Fixed Resilient
ANCHORAGE	Continuous Channel (Design Group 1)
SUBFLOOR CONSTRUCTION	Sleeper and Plywood
RESILIENCE	Rezill Pads
NIKE GRIND	ONLY Connor offers flooring systems with Nike Grind Components
SLAB DEPRESSION	15/32" plywood: 25/32" flooring – 3" 33/32" flooring – 3 1/4" 23/32" plywood: 25/32" flooring – 3 1/4" 33/32" flooring – 3 1/2"
DIN STATUS	D·I·N Meets or exceeds all the requirements of DIN 18032, Part2
TESTING LABORATORY	United States Sports Surfacing Laboratory
CERTIFIED TESTING	Laboratory test equipment calibrated and certified through the ISSS
GREEN STATUS	Managed forests, certification available

WALL BASE DETAIL



THRESHOLD DETAIL (optional accessory)



EQUIPMENT DETAIL (optional accessory)

