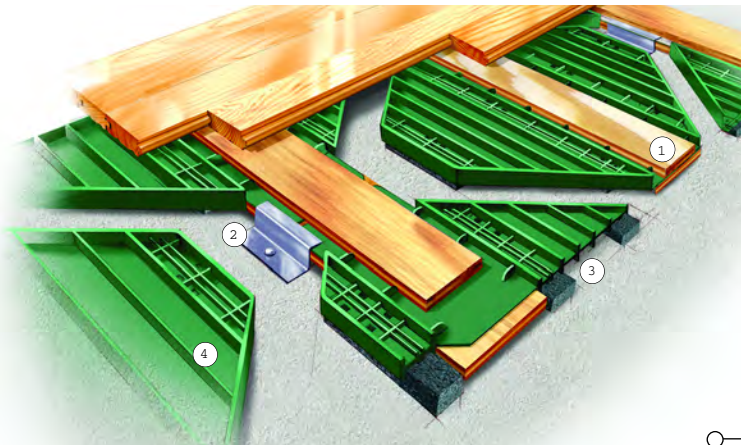


F I X E D R E S I L I E N T

SYSTEM FEATURES AND BENEFITS

A resilient anchored floor system providing a unique subfloor and cushion design that enhances play for athletic activities while engineered for heavy non-athletic loading, consisting in general of a vapor barrier, recycled heavy duty engineered polymer subfloor panels, resilient recycled Rezill pads, 16 gauge anchor clips, steel anchors, maple flooring, sanding, sealers, finishes, game liners and wall base.

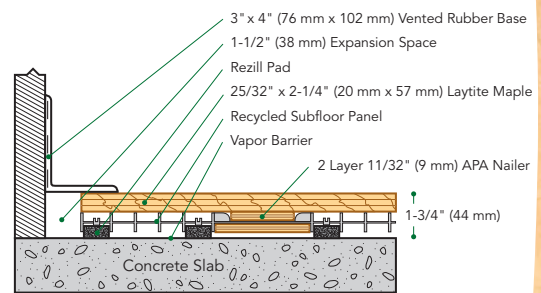


- ① Pre-assembled subfloor sections
- ② Heavy-duty, buckle resistant steel channel provides great resistance to pin pull through and upward pressure
- ③ Rezill Pad for excellent resilient life and loading
- ④ Subfloor panels manufactured from recycled engineered polymer

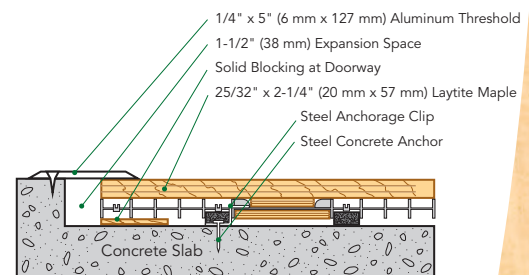
SPECIFICATIONS

MANUFACTURING	ISO 9001:2000 CERTIFIED
U.S. PATENT #	Pending
SYSTEM TYPE	Fixed Resilient
ANCHORAGE	Sectional Channel (Design Group 2)
SUBFLOOR CONSTRUCTION	Recycled Subfloor Panels
RESILIENCE	Lineal Pads
	<p>STAGE ONE Reacting to light athletic loads, individual players, young participants.</p> <p>STAGE TWO Reacting to heavy athletic loads, and multiple participants.</p> <p>STAGE THREE Reacting with protective cushion housing and floor system support.</p>
SLAB DEPRESSION	25/32" (20 mm) flooring – 1 3/4" (44mm) 33/32" (26mm) flooring – 2" (51mm)
DIN STATUS	D·I·N Meets or exceeds all requirements of DIN 18032, Part 2, 2001
TESTING LABORATORY	United States Sports Surfacing Laboratory
CERTIFIED TESTING	Laboratory test equipment calibrated and certified through the ISSS
GREEN STATUS	Managed forests, certification available

WALL BASE DETAIL



THRESHOLD DETAIL (optional accessory)



EQUIPMENT DETAIL (optional accessory)

